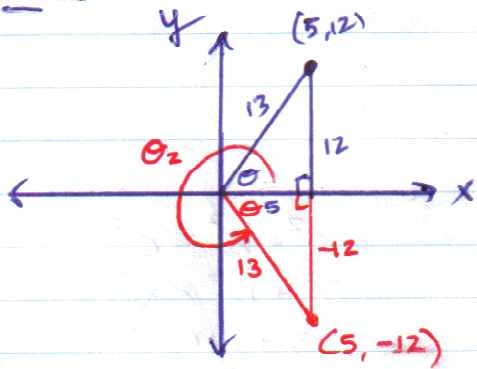
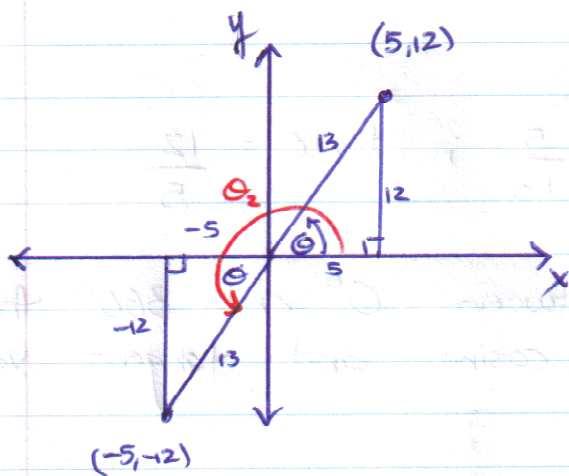


cos θ : $\cos \theta = 5/13$ $\theta = 67.4^\circ$



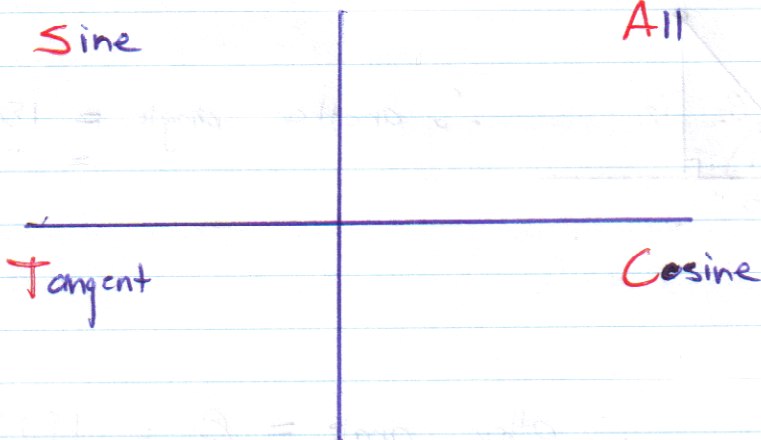
$$\begin{aligned} \theta_2 &= 360^\circ - \theta \\ &= 360^\circ - 67.4^\circ \\ &= 292.6^\circ \end{aligned}$$

tan θ : $\tan \theta = 12/5$, $\theta = 67.4^\circ$



$$\begin{aligned} \theta_2 &= 180^\circ + \theta \\ &= 180^\circ + 67.4^\circ \\ &= 247.4^\circ \end{aligned}$$

C.A.S.T Rule.



CAST rule shows which trig ratios are positive in which quadrant.